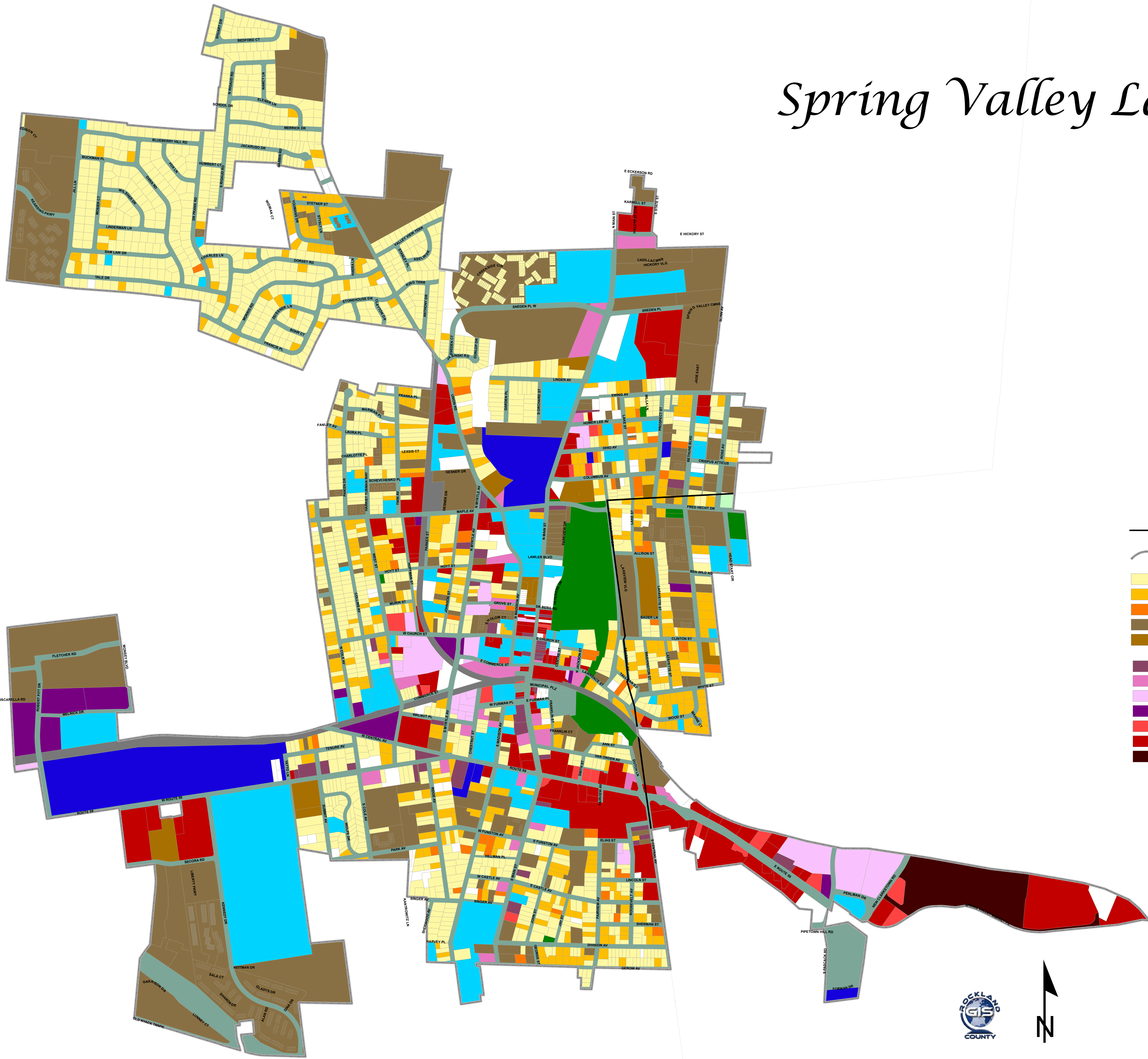


Spring Valley Land Use 2012



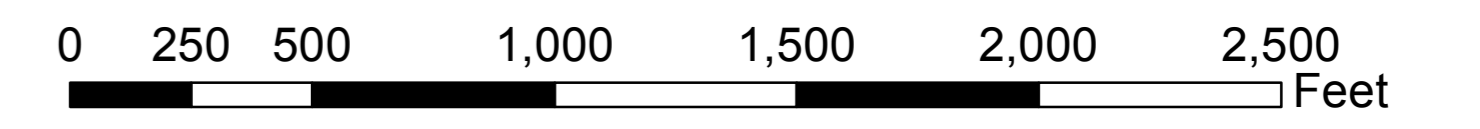
Spring Valley Land Use 2012

GENERALIZED LAND USE CLASSIFICATIONS	ACRES	PERCENT
RESIDENTIAL		
One Family Residential	274	21.4
Two Family Residential	84	6.5
Three Family Residential	11	0.8
Multi Family Residential	261	20.3
Multi Family Residential - Senior Housing	15	1.2
Subtotal:	645	50.3
COMMERCIAL/OFFICE/INDUSTRY		
Mixed Use (Residential/Commercial)	10	0.8
Local Neighborhood	9	0.7
General Business/Community Commercial	88	6.9
Regional Commercial	19	1.5
Office	16	1.2
Light Industrial/Warehouse	23	1.8
Heavy Industrial	17	1.3
Subtotal:	182	14.2
INSTITUTIONAL/UTILITIES		
Institutional/Quasi-Public	118	9.2
Utilities	49	3.7
Subtotal:	167	12.9
AGRICULTURE/PARKS/OPEN SPACE		
Agricultural	0	0.0
Public Park/Open Space	1	0.1
Local Park/Open Space	25	1.9
Private Recreation/Private Open Space	0	0.0
Water	6	0.5
Subtotal:	32	2.5
TRANSPORTATION		
Railroad	20	1.6
Road/Commuter Parking	205	16.0
Subtotal:	225	17.6
OTHER		
Vacant	25	2.7
Not Yet Classified	0	0.0
Subtotal:	25	2.7
TOTALS (Acres/Percents)	1,283	100

Notes:
 1. Land use based on 2012 RPS databases, ongoing field verifications, 2010 Orthophotos, and 2011 Pictometry.
 2. Acres are based on GIS calculations and are rounded to the nearest whole number.
 3. Geography based on February, 2012 tax map parcels.
 4. Water category based on lakes and county-regulated streams.
 5. Land use calculations do not include areas underwater in the Hudson River.
 Prepared June, 2013 by the Rockland County Planning Department, GIS

Legend

- Village Boundaries
- Town Boundary
- One Family Residential
- Two Family Residential
- Three Family Residential
- Multi Family Residential
- Multi Family Residential - Senior Housing
- Mixed Use (Residential/Commercial)
- Office
- Light Industrial/Warehouse
- Heavy Industrial
- Local Neighborhood
- General Business/Community Commercial
- Regional Commercial
- Agricultural
- Local Park/Open Space
- Public Park/Open Space
- Private Recreation/Private Open Space
- Institutional/Quasi-Public
- Utilities
- Vacant
- Road/Commuter parking
- Railroad
- Under Water
- Not Yet Classified



Prepared by: The Rockland County Planning Department - GIS; June, 2013

Project: SpringValley_landuse2012.mxd

Source: Land use based on RPS database from Assessor's office; updates based on interpretations of the 2010 Orthophotos and field checks by The Rockland County Planning Department. Parcel boundaries: Based on February, 2012 Taxmaps.

Information contained herein is provided for informational purposes only. The Rockland County Department of Planning provides geographic information systems (GIS) maps with no claim as to the completeness, usefulness, or accuracy of its content, positional or otherwise. The County of Rockland, its officials and employees make no warranty, express or implied, and assume no legal liability or responsibility for the ability of users to fulfill their intended purposes in accessing or using this map or for omissions in content regarding such map. The data on this map could include technical inaccuracies and typographical errors. The data on this map is presented as is, without warranty of any kind, including, but not limited to, the implied warranties of merchantability, fitness for a particular purpose, or non-infringement.

